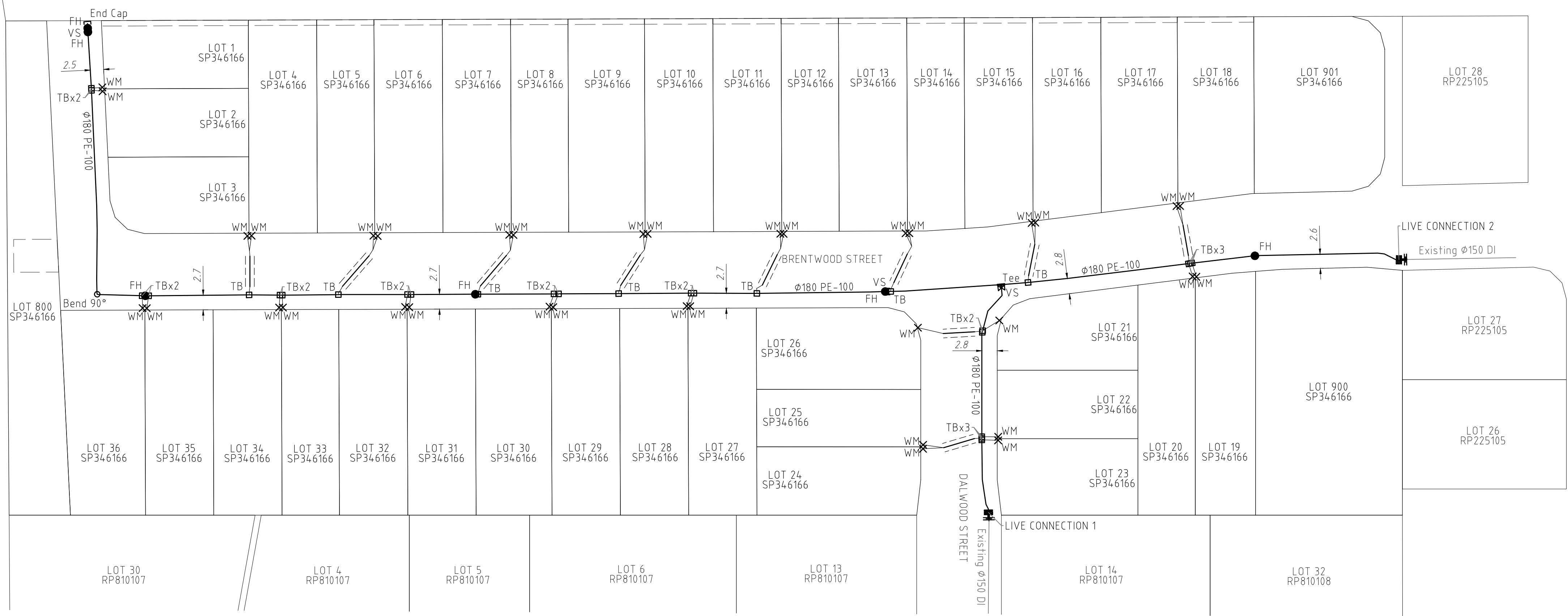


LEGEND

- (FH) FIRE HYDRANT
- ⋈ (VS) STOP VALVE/(FP) FLUSHING POINT
- || (VA) SCOUR ASSEMBLY
- (RT) READY TAP/(TB) TAPPING BAND
- × (WM) WATER METER (SEQ 20Φ)
- └┐ END CAP
- ├┤ TEE
- ^ REDUCER
- BEND
- DICL WATER MAIN CROSSING
- ===== CONDUIT/CROSSING
- EXISTING WATER



REGISTERED CADASTRAL SURVEYOR (QLD) CERTIFICATION

LandPartners Pty Ltd, hereby certify that the horizontal and vertical locations, and dimensions shown on this plan are a true and correct record of the As Constructed information.

Signed: *R. G. Anderson* Date: 25/10/2024
(Authorised Delegate)

LandPartners Pty Ltd, Registered Cadastral Surveyor SBQ ID 4118

NOTES

- ALL FIRE HYDRANTS ARE 100 SPRING U.N.O.
- ALL WATER SERVICE PIPE CONDUITS ARE 100 PVC-M PN8 U.N.O.
- ALL DICL PIPES ARE PN35
- ALL WATER MAINS ARE PN16 U.N.O

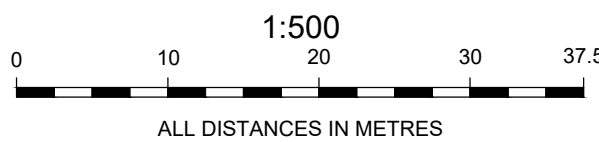
ENGINEER'S CERTIFICATION

I, _____, hereby certify that:

1. The information contained in this drawing / document is in compliance with approved drawings and design.
2. The new water and sewerage works defined by this drawing have been designed and constructed in accordance with the SEQ Code.
3. This represents an accurate record of as-constructed works.
4. I accept responsibility for the information contained in this drawing / document.

RPEQ (signature) _____ RPEQ No. _____ Date: _____

AS CONSTRUCTED



A1

INDEX	DATE	REVISIONS	DRAWN	CHECKED	PASSED
1	25/10/2024	INITIAL ISSUE	MJK	RA	RA

DRAWN	MJK	25/10/2024
CHECKED	RA	25/10/2024
PASSED	RA	25/10/2024
INITIALS	DATE	



Brisbane Office
Level 1
18 Little Cobb Street
Milton QLD 4064
PO Box 1399
Milton
QLD 4064
P: (07) 3842 1000
F: (07) 3842 1001
E: info@landpartners.com.au
W: www.landpartners.com.au



Queensland Urban Utilities

2236 BEAUDESERT ROAD, CALAMVALE
AS-CONSTRUCTED WATER
23-PNT-69061

SCALE 1:500

SHEET 1 OF 1 SHEETS

DRAWING NO.

BRSS8222-000-80-1